

# Clayton Historic Preservation, Inc.

Museum located at  
29 East Avenue, Clayton, NJ 08312-0029  
P. O. Box 29, Clayton, N. J. 08312-0029

Email:  
Website:

CHP@ClaytonHistoric.org  
www.ClaytonHistoric.org

Editor: Patricia Lillie      Volume: 14      Issue: 01

## *A Year in the Life of Clayton, New Jersey*

**Clayton Historic Preservation, Inc. (CHP)** collects personal papers, local business and organization records, photographs, scrapbooks, early maps, genealogies, church histories, family Bibles, Civil War sketches and history books, newspapers, artifacts, and more. Our museum archival holdings total over 100 linear feet of materials, dating from circa 1850 to the present. The museum, located at 29 East Avenue, is a showplace for these Clayton artifacts.

The year of 2016 presented a great opportunity for **CHP** when the Borough of Clayton accepted a charitable gift of property from the Estate of Mary Louise Baker to the Borough of Clayton for the **Clayton Historic Preservation, Inc.'s** sole use to house our historical archives. Ordinance # 13-2016 was accepted by Mayor Tom Bianco and Council on May 12, 2016. With the assistance of federal and state grants, and together with private donations, **CHP** will work together with the Borough to open our museum-house, *The Madden-Baker House*. Work is scheduled to start in the Spring of 2017, and no completion date has been determined.

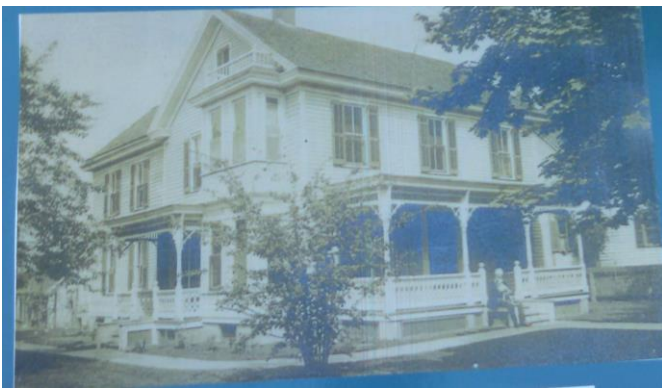


PHOTO ABOVE: Madden-Baker homestead, circa 1900. Future home of the Clayton Historic Museum, 222 South Delsea Drive. Seated on front step is Joe Madden with Petey, his dog.

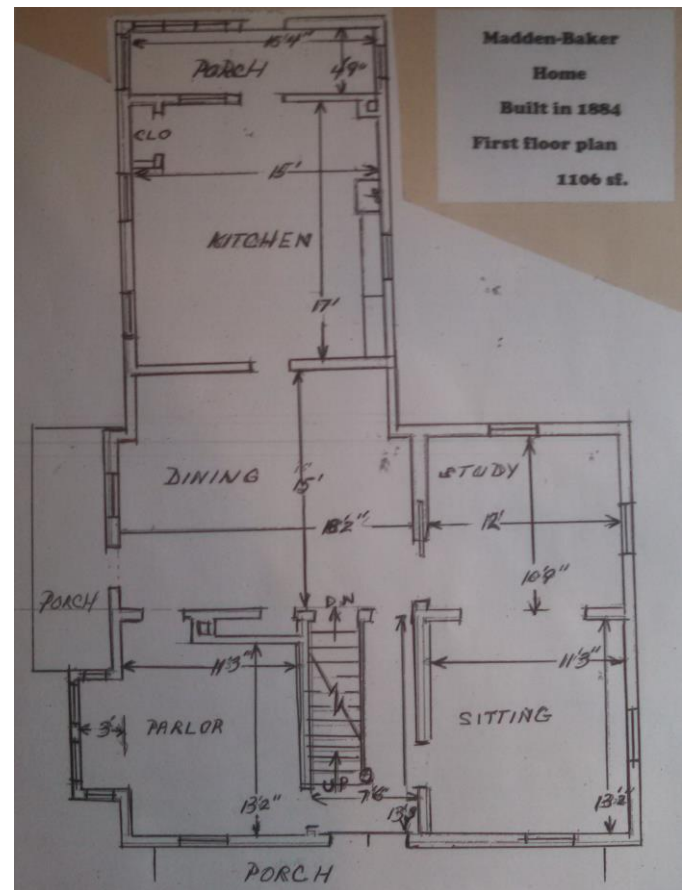


PHOTO ABOVE: Recent rough draft by CHP Chairman, Joe Salvatore, shows the first floor of Madden-Baker House; approximately 1106 sq. ft. will be for museum display flooring. Second floor will be designated as research rooms, offices, and historical library.

Originally built in 1884, this three-story, Victorian style home was featured in the February, 1991 HOME MECHANIX magazine. The article featured the many gingerbread designs throughout the house.

### *Index*

|                              |         |
|------------------------------|---------|
| CHP 2016 Members.....        | Page 03 |
| Christmas Holiday, 2016..... | Page 08 |
| Fall Fest, 2016.....         | Page 07 |
| Historic Marker.....         | Page 04 |
| History on the Move.....     | Page 06 |
| Madden-Baker House.....      | Page 01 |
| Museum Visitors.....         | Page 02 |
| New Jersey Proud.....        | Page 02 |
| Senior Center.....           | Page 05 |

February, 2017 Edition.....Page 01