

# Clayton Historic Preservation, Inc.

Museum located at  
29 East Avenue, Clayton, NJ 08312-0029  
P. O. Box 29, Clayton, N. J. 08312-0029

Email:  
Website:

CHP@ClaytonHistoric.org  
www.ClaytonHistoric.org

Editor: Patricia Lillie                      Volume: 14                      Issue: 03

## *Forty Years in Clayton Schools*

Reprinted from the Clayton Public Schools Newsletter, Vol. 6, No. 3,  
May 1968  
Written by  
Harris A. Rossello

### FORTY YEARS IN CLAYTON SCHOOLS

T. Franklin Kershner will complete forty years of service in the Clayton Public Schools on June 30, 1968. He submitted his resignation to the Clayton Board of Education on March 4, 1968. During those forty years in Clayton, he has been a teacher, High School Principal and from 1948 until now, he has acted as Superintendent of Schools.

It was in September of 1928, the first year the "new high school" was used (now Silver Lake Academy House Condominiums), that he came to Clayton as the Industrial Arts instructor. The new, improved general shop contained all new up-to-date equipment including power equipment, some of which is still in use (in 1968).

Mr. Kershner has seen and experienced many changes during the past forty years. In 1928, the senior class consisted of eighteen students. He chaperoned this group, along with Miss Emma Moore (daughter of John M. and Ellie R. Moore), the Latin and History teacher, on a three-day trip to Washington, D. C. At that time, Clayton High School was a four-year high school, consisting of less than one hundred students. Clayton received students at that time from Franklinville, Malaga, and Newfield. Students used the train (West Jersey & Seashore Rail Road) station depot located on West Academy Street for transportation.

The athletic field was in the same location as it is today (reference to Haupt Field) but there was no fence, no bleacher or grand stand, no track, no field house, just a field that sloped downhill, an advantage to the team headed in the proper direction. A toss of the coin not only gave the winner a choice of wind and sun direction, but also the pitch of the field.

Teacher annual salaries in 1928 started at \$800.00, payable at the end of the month. When you reached \$1,000.00 a year, you usually reached your maximum. Raises were handed out carefully and usually not in consecutive years. During the depression years, 1929-1938, no one received an increment; in fact, all salaries were decreased ten percent. In those days, equipment, supplies, books, and other necessities were not very plentiful.

Continued Page 03

August 01, 2017 Edition.....Page 01

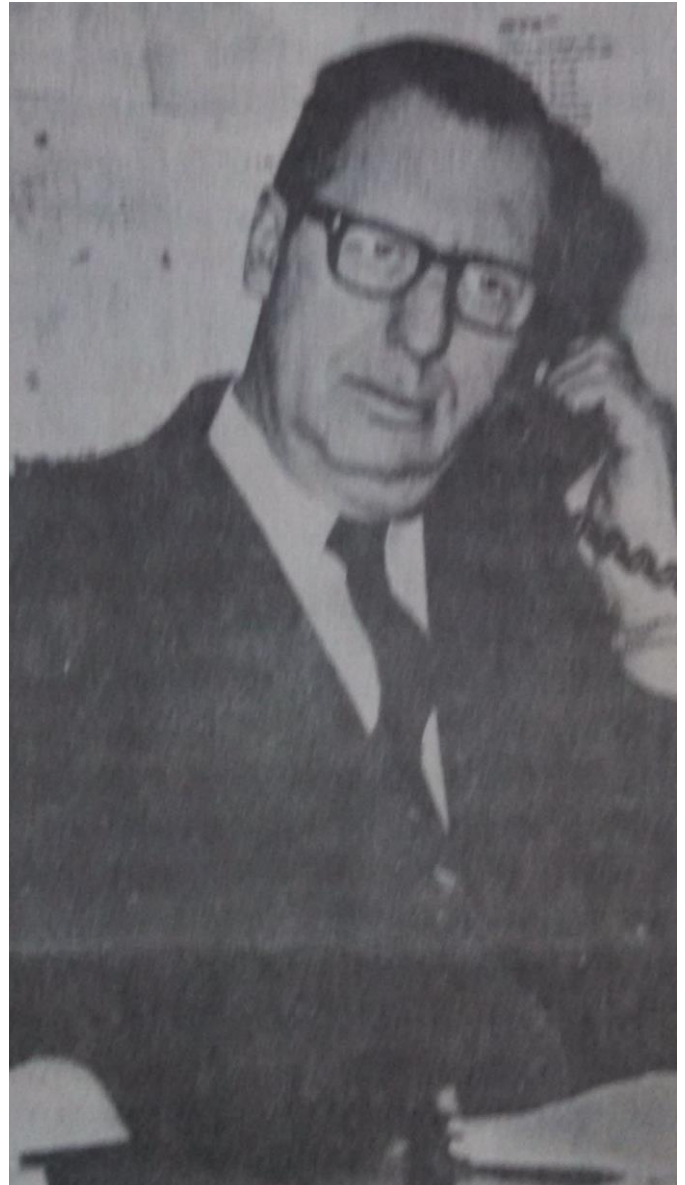


PHOTO ABOVE: T. Franklin Kershner, Clayton Superintendent of School retires after 40 years of dedicated service. Photo from CHP archives.

### *Index*

Child Labor Laws.....	Page 10
Clayton Schools, 2017.....	Page 06
Clayton Township Schools, 1858.....	Page 09 & 10
Faculty, Who's Who.....	Page 07
First Exchange Student, 1968.....	Page 06
First School in Fislerville.....	Page 02
Historic Marker.....	Page 08
Izsard, William.....	Page 04
Kershner, T. Franklin retires, 1968...	Page 01, 03 & 05
Silver Lake, correction.....	Page 08
Two-room Schoolhouses.....	Page 07